



PUERTA AZUL

BY ARTIGAS



BY ARTIGAS

With 75 years of experience, Artigas Arquitectos have matured in a way to appreciate architecture from its intended use and its surrounding environment in order to preserve a timeless essence and character. Architecture is an art form that expresses emotions and sensations through the use of spaces created by mankind and so that will serve our needs, that is why we strive to achieve a correlation between the construction and the surrounding space.

Puerta Azul by Artigas intends to show this architectural concept based on the sensory experience that its design reflects.

Con 75 años de experiencia, Artigas Arquitectos ha madurado una forma de apreciar la arquitectura a partir del usuario y el entorno para conservar un carácter atemporal.

La arquitectura es un arte que expresa emociones y sensaciones mediante espacios creados por el hombre y puestos a su servicio, por lo que nos dedicamos a establecer una correspondencia viva entre la obra y su ámbito.

Puerta Azul by Artigas, pretende plasmar este concepto arquitectónico basándose en la experiencia sensorial que su diseño refleja y que mejor lugar para esto que Tulum.



TULUM

Tulum is a magical place where the contrast of the ocean and the jungle merge in perfect harmony.

This paradise, part of the Mexican Caribbean, where the Mayan Ruins are closely guarding the coral reefs below the crystal-clear waters and they are witness to every spectacular sun rise

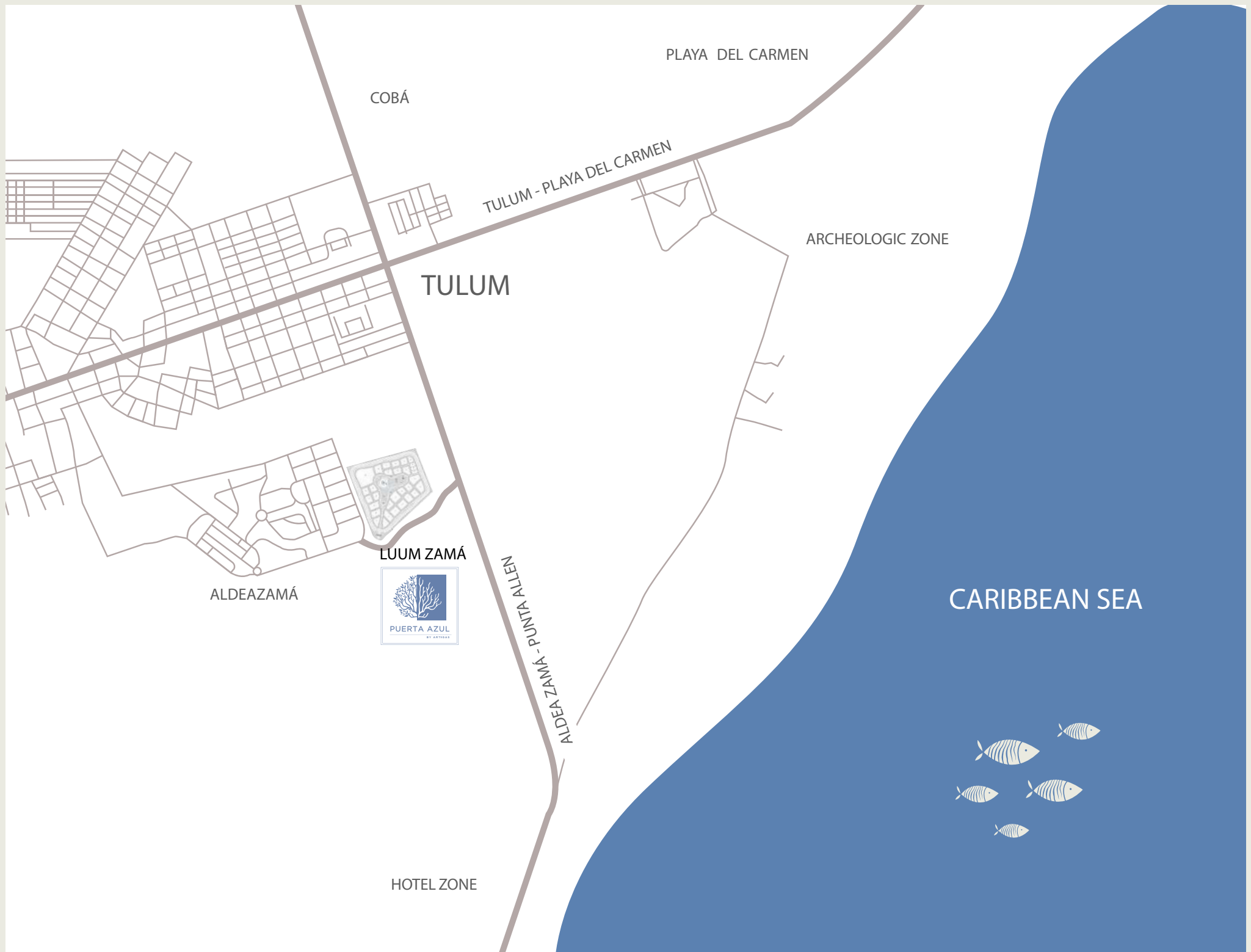
Tulum es el lugar donde el contraste entre la selva y el mar comulgan en perfecta armonía.

Un paraíso donde las Ruinas Mayas vigilan el arrecife debajo de aguas cristalinas y son testigo de increíbles amaneceres.



The image features a repeating pattern of blue leaves and fish on a white background. The leaves are on the left side, and the fish are on the right side. A central dark blue banner contains the text "That something between the jungle and the sea".

That something between the jungle and the sea



PLAYA DEL CARMEN

COBÁ

TULUM - PLAYA DEL CARMEN

ARCHEOLOGIC ZONE

TULUM

ALDEAZAMÁ

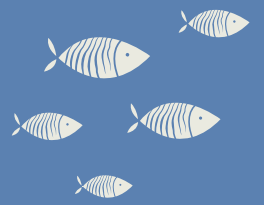
LUUM ZAMÁ



ALDEAZAMÁ - PUNTA ALLEN

CARIBBEAN SEA

HOTEL ZONE





LUUM ZAMÁ

Lúum Zamá is a macro lot sub divided into 31 multifamily lots and one mix use lot for commercial purposes.

With its organic shape, the center part is a very large common area intended to provide ample space for recreation and comfort.

Lúum Zamá es un macro que cuenta con 31 lotes multifamiliares y un lote mixto para uso comercial y habitacional.

En la parte central del macro se contempló una gran extensión de área común en forma orgánica que contempla zonas de esparcimiento y confort.

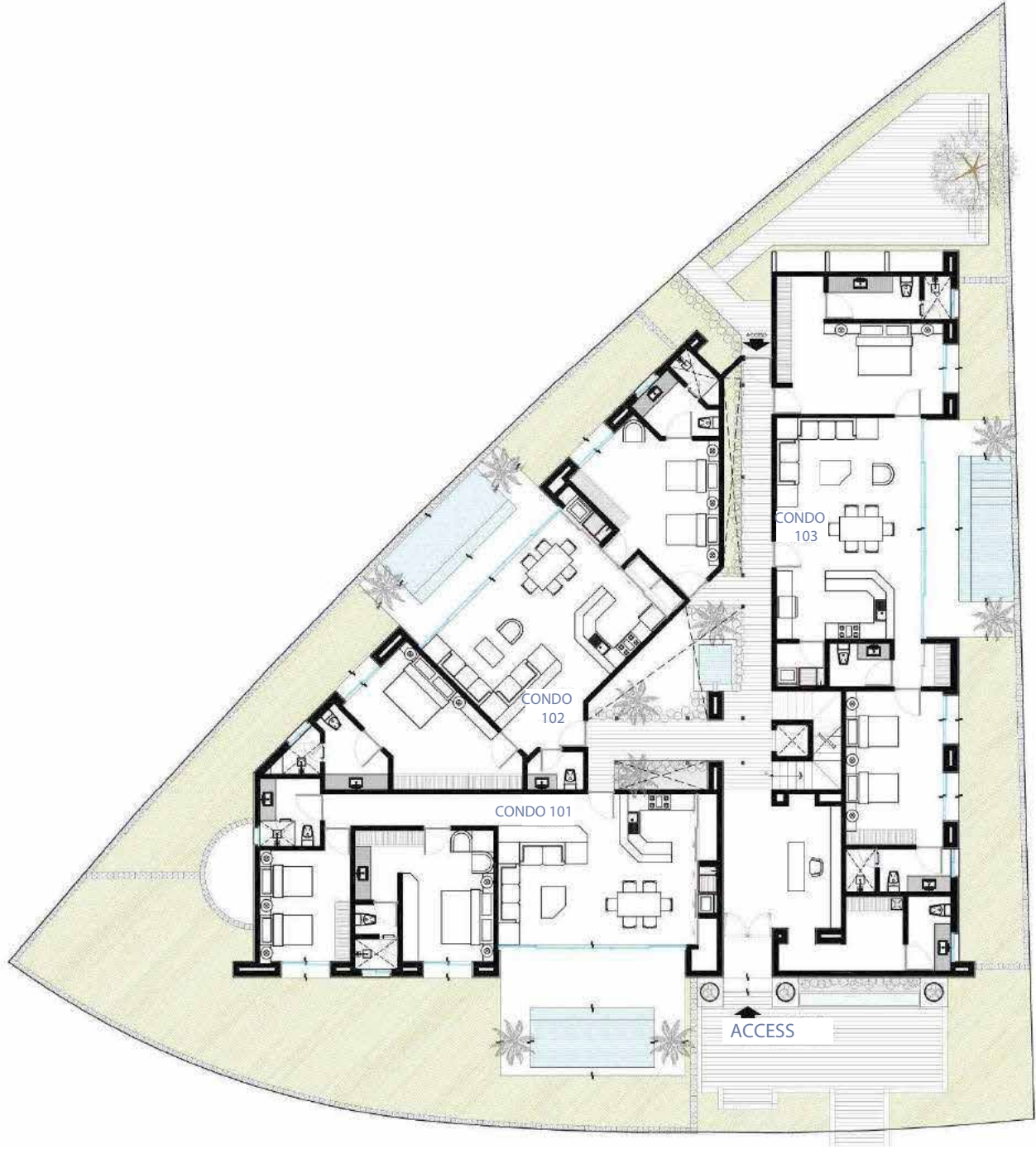
AMENITIES

- Club house
Casa club
- Pool
Alberca
- Restaurant
Restaurante
- Market
Mercadito
- Bike Path
Ciclovía
- Running track
Pista de correr
- Kids area
Área de niños
- Amphitheater
Anfiteatro
- Yoga palapa
Palapa de yoga
- Temazcal
Temazcal
- Work out area
Area de ejercicio
- Watch tower
Mirador









GROUND FLOOR
PLANT A BAJ A





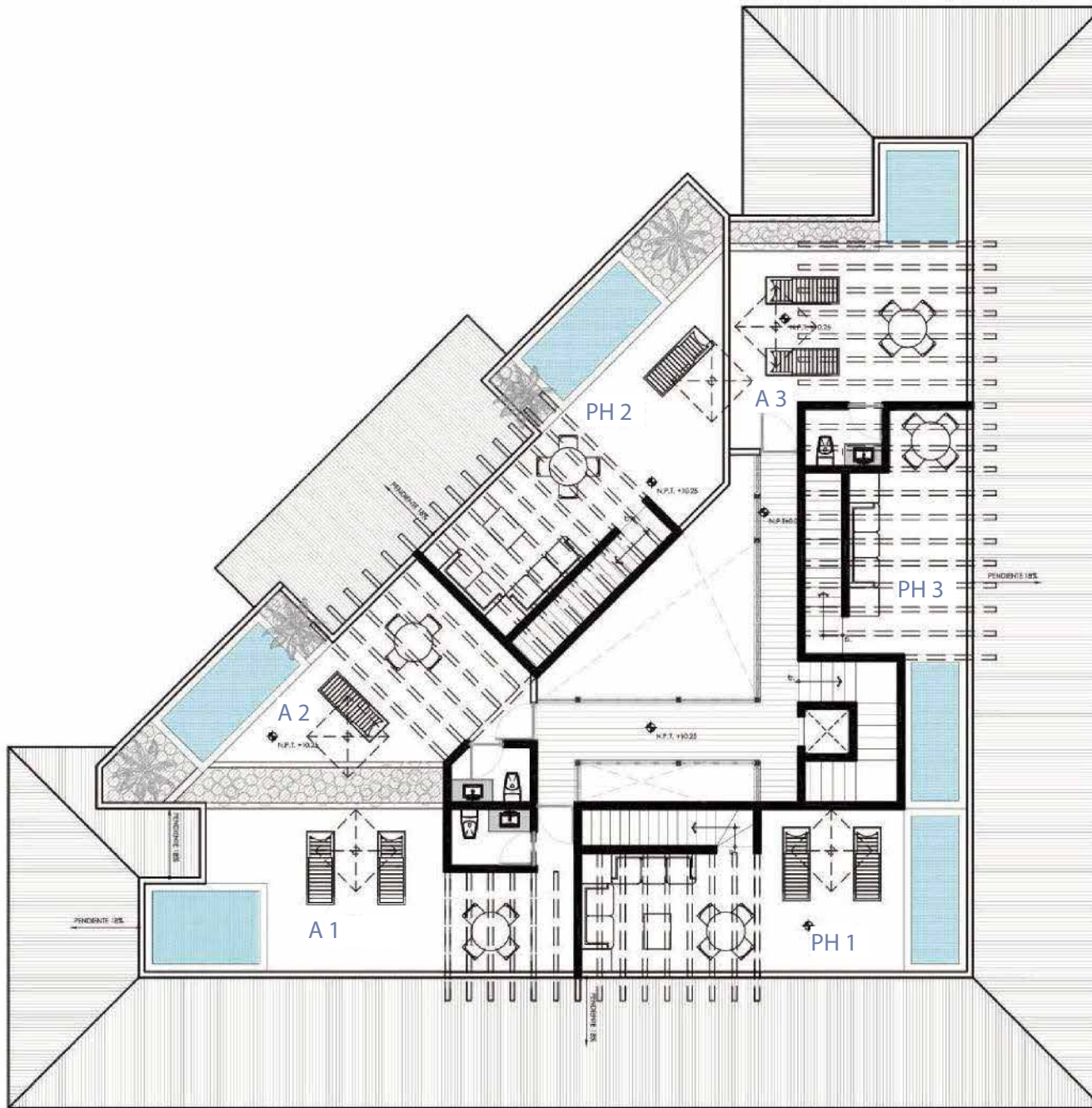
FIRST FLOOR
NIVEL # 1





SECOND FLOOR
NIVEL # 2



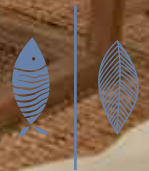


ROOF GARDEN
ASOLEADERO













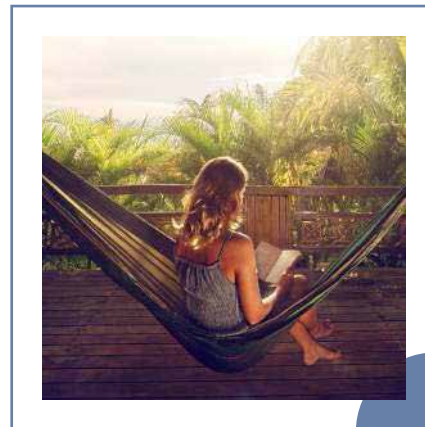
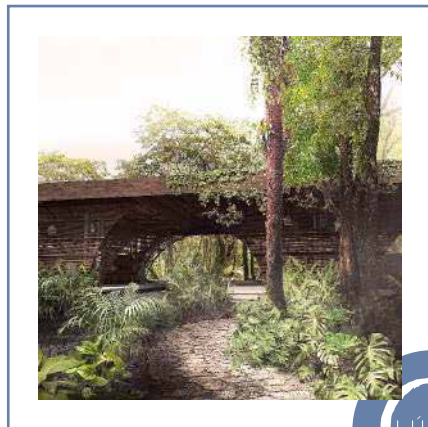
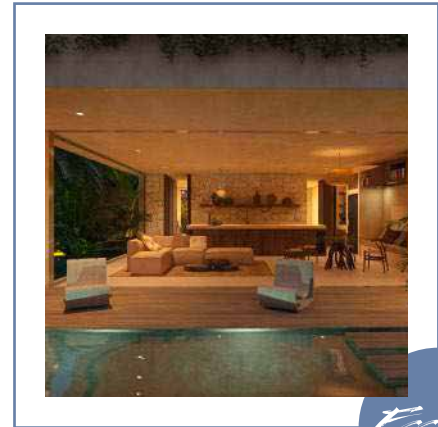
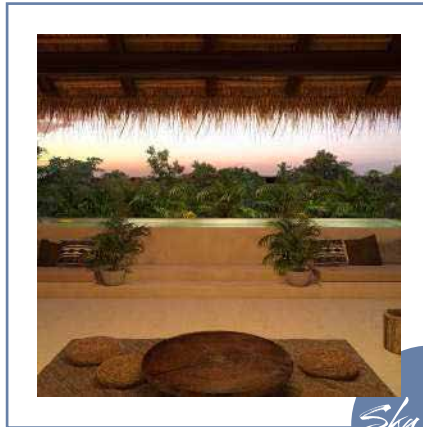
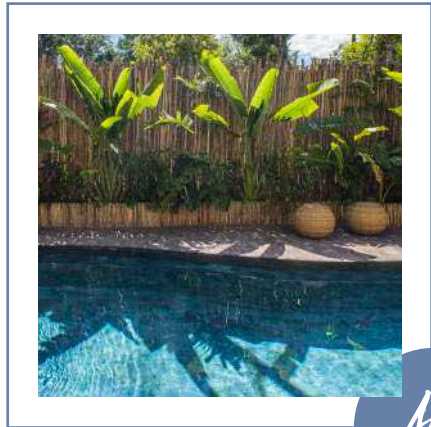
AMENITIES

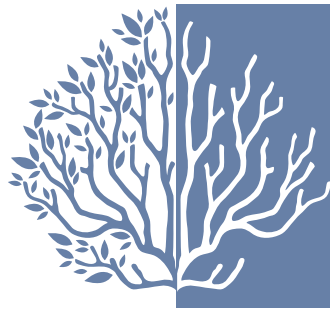
- Boutique Condos (Artigas)
Condos Boutique (Artigas)
- 9 exclusive units
9 condos exclusivos
- All with private pool
Todos con alberca privada
- Elevator
Elevador
- Lock Off
Lock Off
- Large terraces and roof top with majestic jungle views
Amplias terrazas y "asoleaderos" con majestuosas vistas de la jungla
- Inside a Gated Community (Luum Zama)
Dentro de un Gated Community (Luum Zama)
- Privacy and security
Privacidad, caseta de seguridad



OUR PROJECTS

NUESTROS PROYECTOS





PUERTA AZUL

BY ARTIGAS

puertaazultulum.com